



Visit [OregonTsunami.org](http://OregonTsunami.org)  
to find more great  
resources!

# TSUNAMI EVACUATION MAP

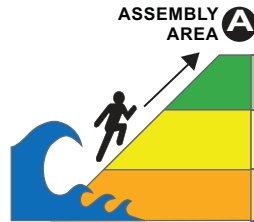


## IF YOU FEEL AN EARTHQUAKE:

- Drop, cover and hold
- Move immediately inland to higher ground
- Do not wait for an official warning

## SI USTED SIENTE EL TEMBLOR:

- Tirese al suelo, cúbrase, y espere
- Dirijase de inmediato a un lugar más alto que el nivel del mar
- No espere por un aviso oficial



ASSEMBLY  
AREA **A** ÁREA  
REUNIÓN

NOTICE: This tsunami evacuation zone map was developed by DOGAMI for the purpose of guiding the public out of the tsunami inundation zone in the event of a tsunami evacuation. This map adopts recommendations from the Oregon Tsunami Advisory Council. The evacuation routes were developed by DOGAMI, in consultation with local emergency officials and OEM.

**OUTSIDE HAZARD AREA:** Evacuate to this area for all tsunami warnings or if you feel an earthquake.

**LOCAL CASCADIA EARTHQUAKE AND TSUNAMI:** Evacuation zone for a local tsunami from an earthquake at the Oregon coast.

**DISTANT TSUNAMI:** Evacuation zone for a distant tsunami from an earthquake far away from the Oregon coast.

**ZONA DE PELIGRO EXTERIOR:** Evacue a esta área para todas las advertencias del maremoto o si usted siente un temblor.

**MAREMOTO LOCAL (terremoto de Cascadia):** Zona de evacuación para un tsunami local de un temblor cerca de la costa de Oregon.

**MAREMOTO DISTANTE:** Zona de evacuación para un tsunami distante de un temblor lejos de la costa de Oregon.

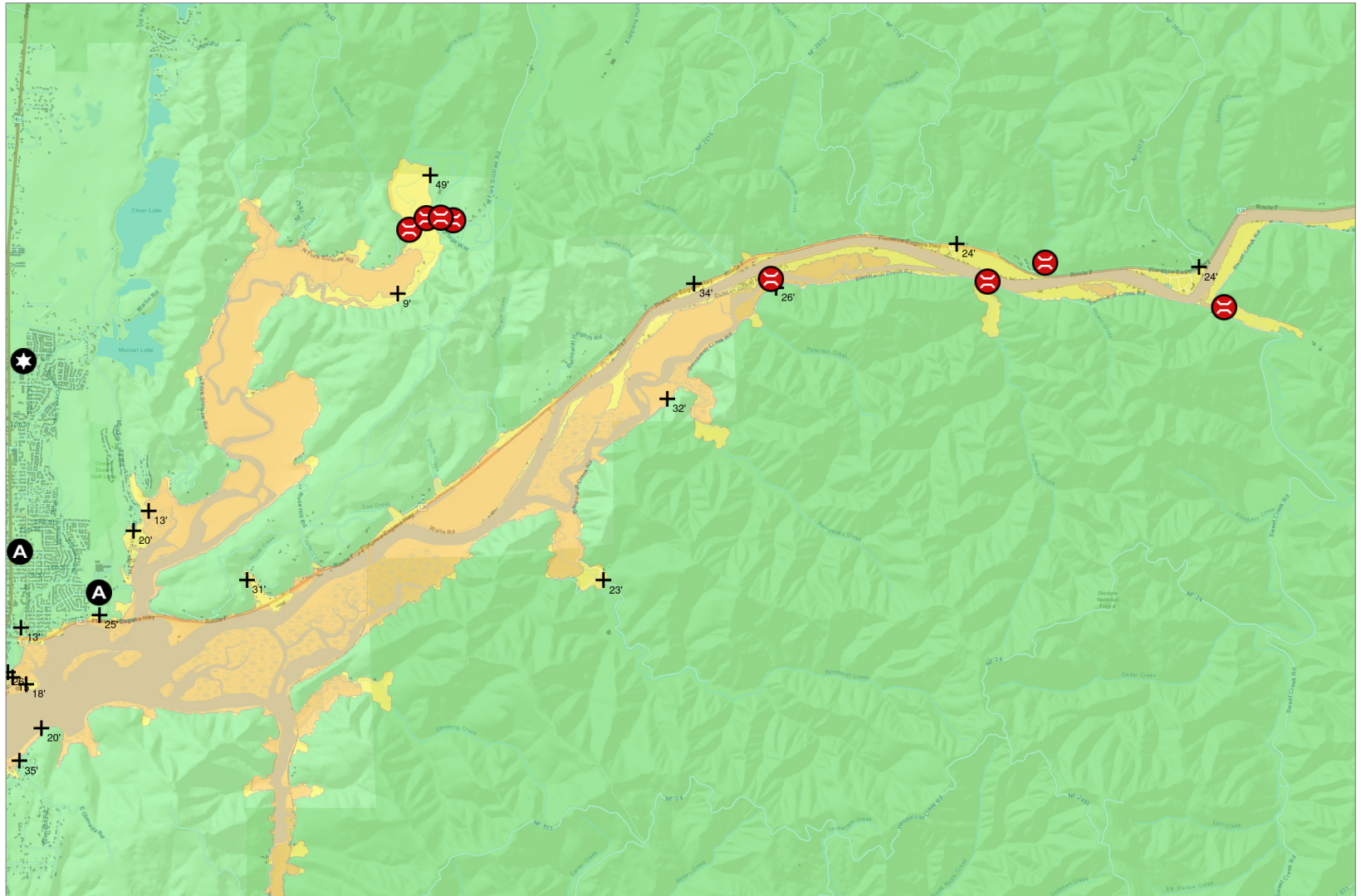
## Map Symbols / Símbolos del Mapa

- A** Assembly Area /  
Área Reunion
- ★** Law Enforcement /  
Policía
- ⊖** Bridge (May Fail) /  
Puente (Puede Fallar)
- +** Elevation, in feet /  
Elevación, en pies



Scale / Escala  

 1/2 mile  
 1/2 km



8 August 2025

Contact: Oregon Department of Geology and Mineral Industries, 541-819-9023



More resources at  
[OregonTsunami.org](http://OregonTsunami.org)

# TSUNAMI EVACUATION INFORMATION



## About Tsunamis

A **tsunami** is a series of sea waves, usually caused by a displacement of the ocean floor by an undersea earthquake. As tsunamis enter shallow water near land, they increase in height and can cause great loss of life and property damage. Typical wave heights from tsunamis occurring in the Pacific Ocean over the last 500 years have been 20-65 feet at the shoreline, and in some areas as much as 100 feet.

Research suggests that tsunamis have struck the Oregon coast on a regular basis. They can occur any time, day or night. We distinguish between a tsunami caused by an undersea earthquake near the Oregon coast (a **local** tsunami) and an undersea earthquake far away (e.g. Japan or Alaska) from the coast (a **distant** tsunami).

For a distant tsunami, you will have time to respond, and warnings will be issued. In contrast, for a local tsunami you will first feel an earthquake characterized by strong shaking. A tsunami is probably already on its way. Quickly move inland to high ground.

## BE PREPARED!

- ◆ **Practice your evacuation route**
- ◆ **Assemble emergency go-kits with at least a 96 hour supply for each family member:**
  - Local map showing evacuation route to high ground
  - First-aid supplies, prescription and non-prescription medication
  - Water bottle and filtration or treatment supplies capable of providing 1 gallon per person per day
  - Non-perishable food (ready-to-eat-meals, food ration bars, baby food, energy bars)
  - Cooking and eating utensils, can opener, Sterno® or other heat source
  - Matches in water-proof container or lighter
  - Shelter (tent), sleeping bags, blankets
  - Portable radio, NOAA weather radio, flashlight, and extra batteries
  - Rain gear, sturdy footwear, extra clothing
  - Personal hygiene items (toilet paper, soap, toothbrush)
  - Tools and supplies (pocket knife, shut-off wrench, duct tape, gloves, whistles, plastic bags)
  - Cash - small currency amounts

## WHAT TO DO! *If you feel an earthquake, a tsunami may be coming.*

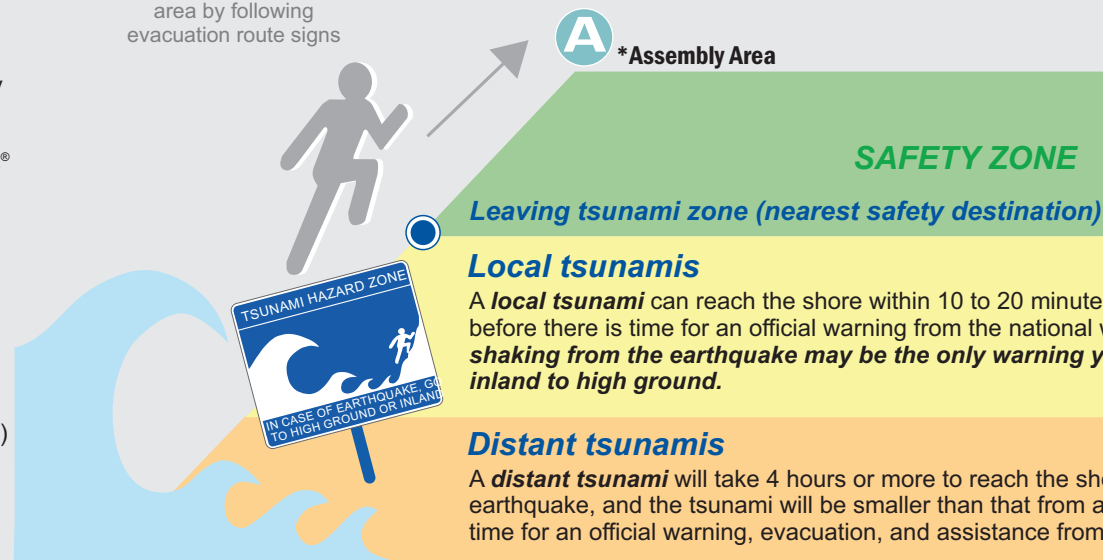
- ◆ **DROP, COVER, HOLD-ON** until the earthquake is over. Protect yourself, then...
- ◆ **QUICKLY MOVE INLAND TO HIGH GROUND. DO NOT DELAY OR WAIT** for an official warning. **GO ON FOOT.**
- ◆ **FOLLOW EVACUATION ROUTE SIGNS AND ARROWS**
- ◆ **DO NOT SLOW DOWN.** Points of safety may be identified by **BLUE LINES** painted on the road or by an Assembly Area\* sign.
- ◆ **DO NOT RETURN** to the inundation zone - large waves may continue to come onshore for up to 12 hours. **WAIT** for official NOAA tsunami cancellation and a cautionary re entry notice by local emergency officials before returning to low lying areas.

## WHAT TO DO for both distant and local tsunami

1. Evacuate on foot, if at all possible. Follow evacuation signs and arrows to the nearest point of safety or Assembly Area\*. Points of safety may be identified by **BLUE LINES** painted on the road.
2. If the emergency is a distant tsunami, then help may arrive. In the event of a local tsunami, it is unlikely that anyone will help you, so make a plan and be prepared!
3. Stay away from potentially hazardous areas. **WAIT** for official NOAA tsunami cancellation and a *cautionary re entry notice* by local emergency officials before returning to low lying areas. Tsunamis often follow river channels, and dangerous waves can persist for several hours. Local officials must inspect flooded or earthquake-damaged structures before anyone can

\*Assembly Areas **A** are included on the map, where identified. Always evacuate to your nearest point of safety first. Make your way to you nearest Assembly Area after large waves have stopped.

Look for tsunami hazard zone signs and be ready to leave an area by following evacuation route signs



## Local tsunamis

A **local tsunami** can reach the shore within 10 to 20 minutes after the earthquake - before there is time for an official warning from the national warning system. **Ground shaking from the earthquake may be the only warning you receive. Quickly move inland to high ground.**

## Distant tsunamis

A **distant tsunami** will take 4 hours or more to reach the shore. You will feel no earthquake, and the tsunami will be smaller than that from a local earthquake. There is time for an official warning, evacuation, and assistance from local emergency officials.